

# **Objective of Vehicle Safety Communication**

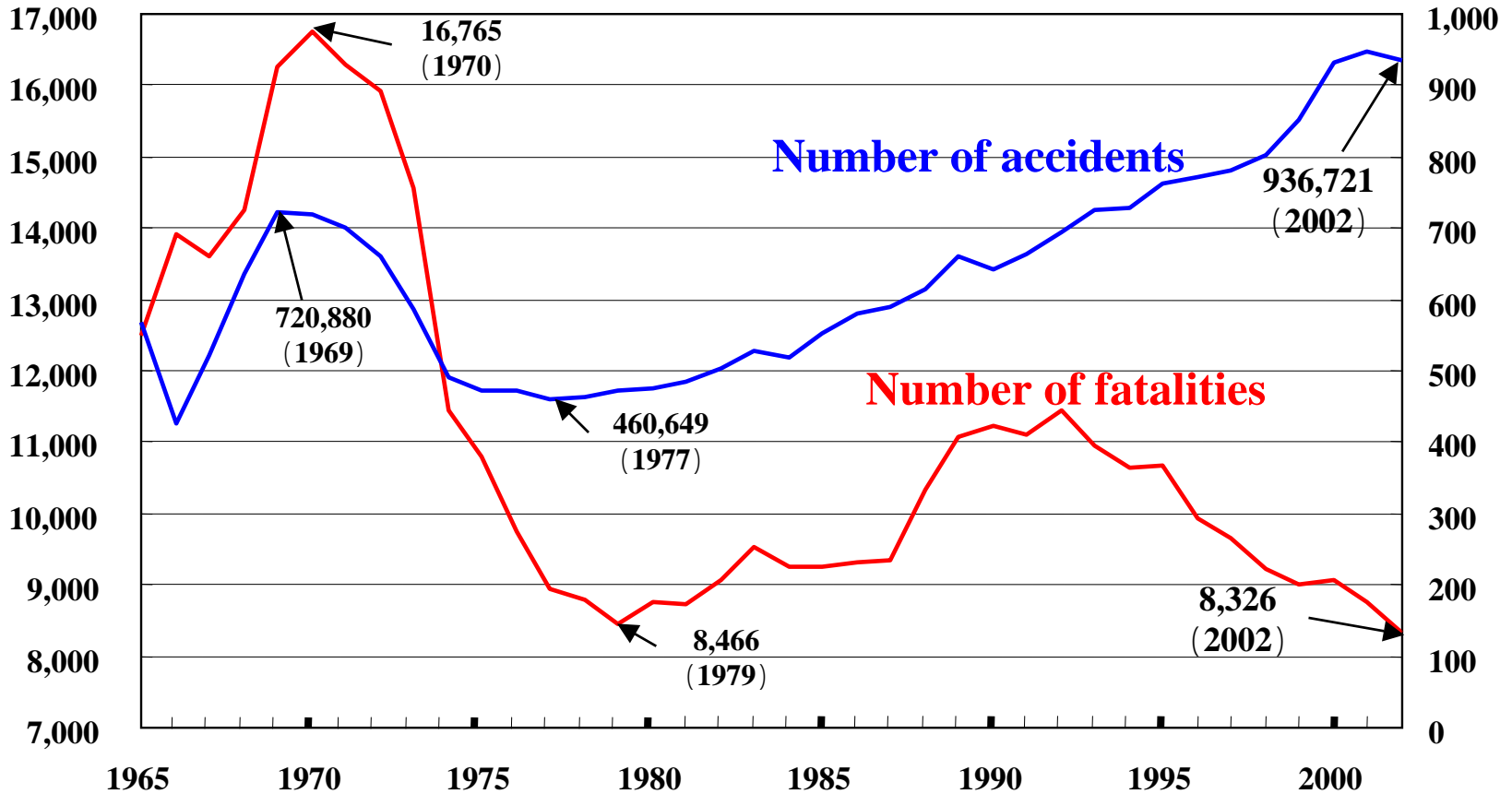
**HOSAKA Akio**

**Advanced Cruise-Assist Highway System Research Association  
(AHSRA)**

# The Trend of Traffic Accidents in Japan

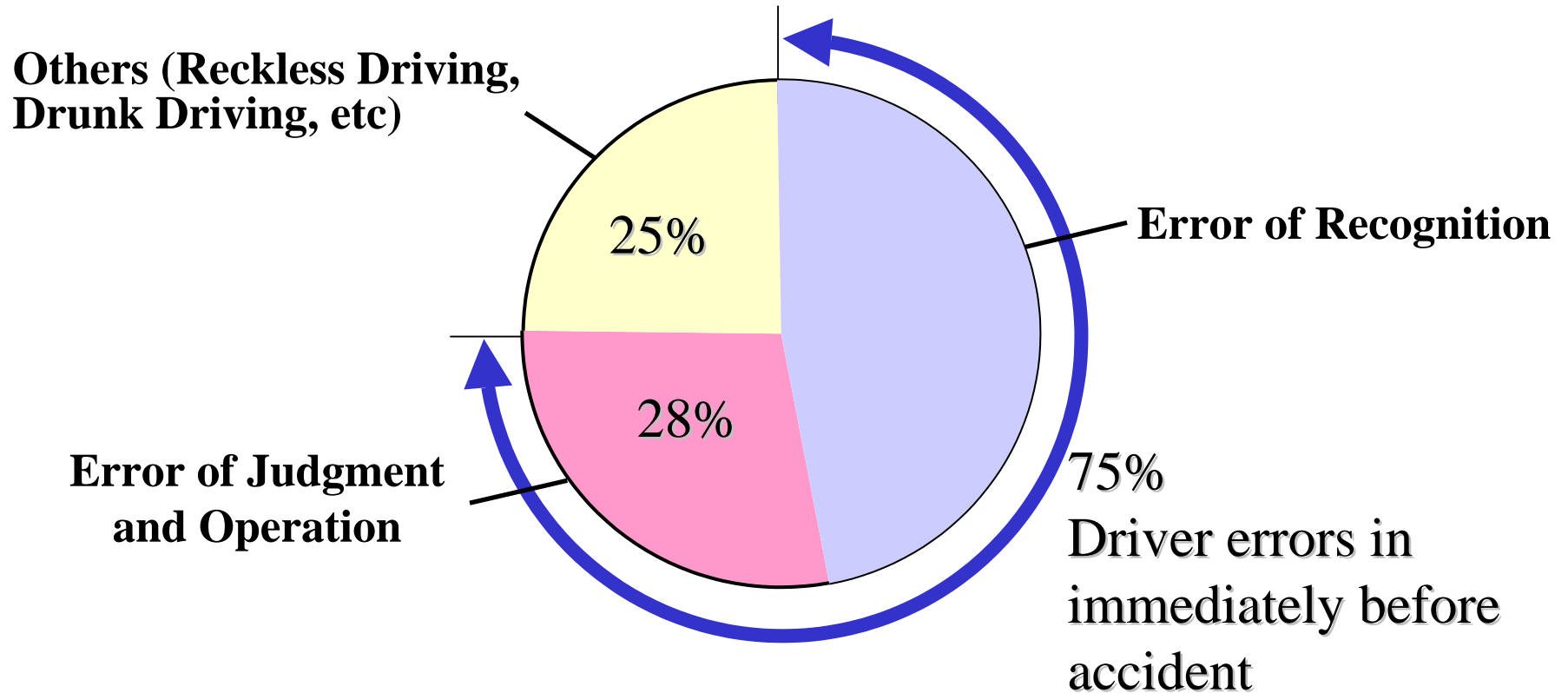
Numbers of fatalities

Number of accidents  
(unit: thousands)

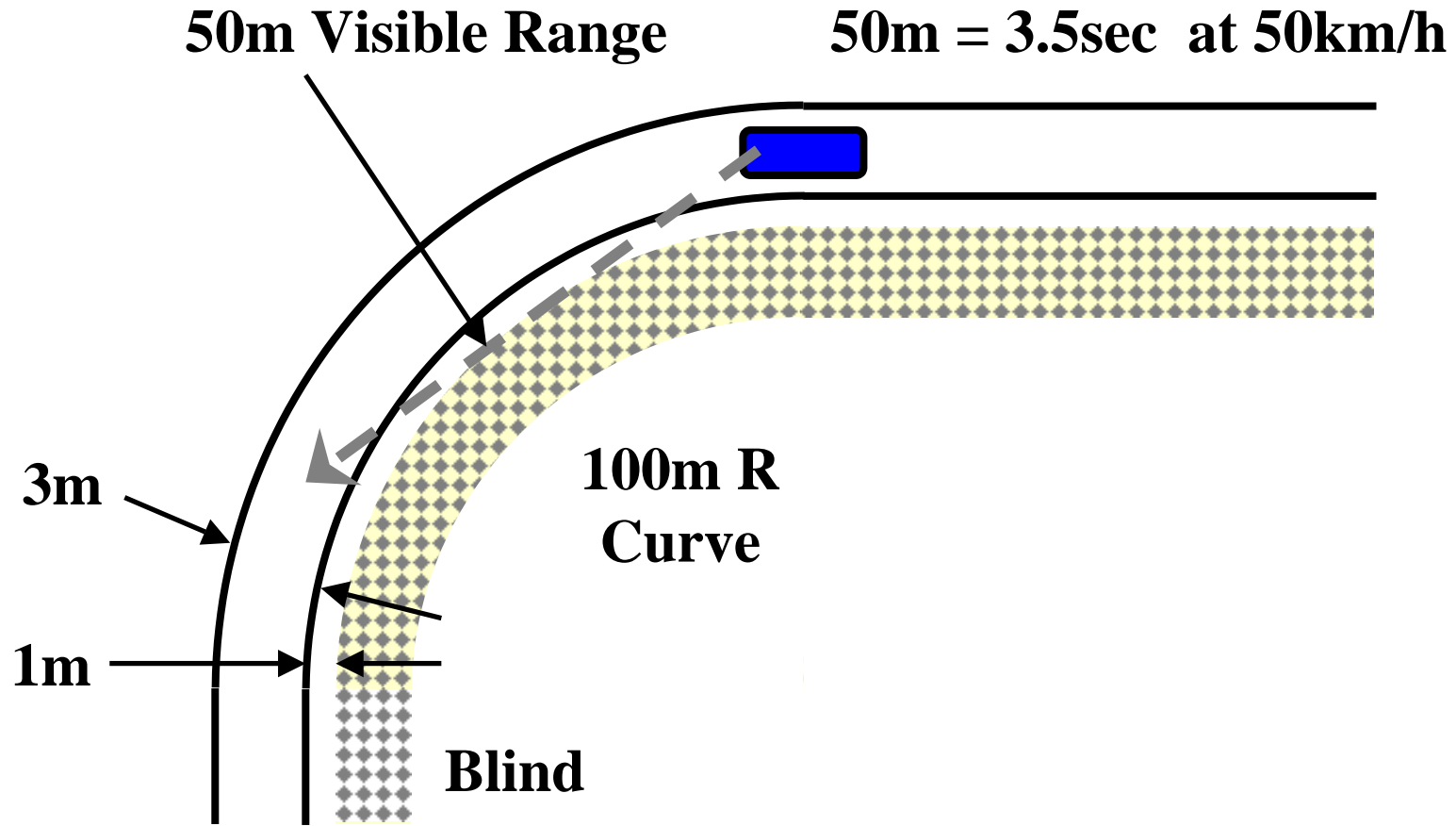


from Traffic Accident Statistics

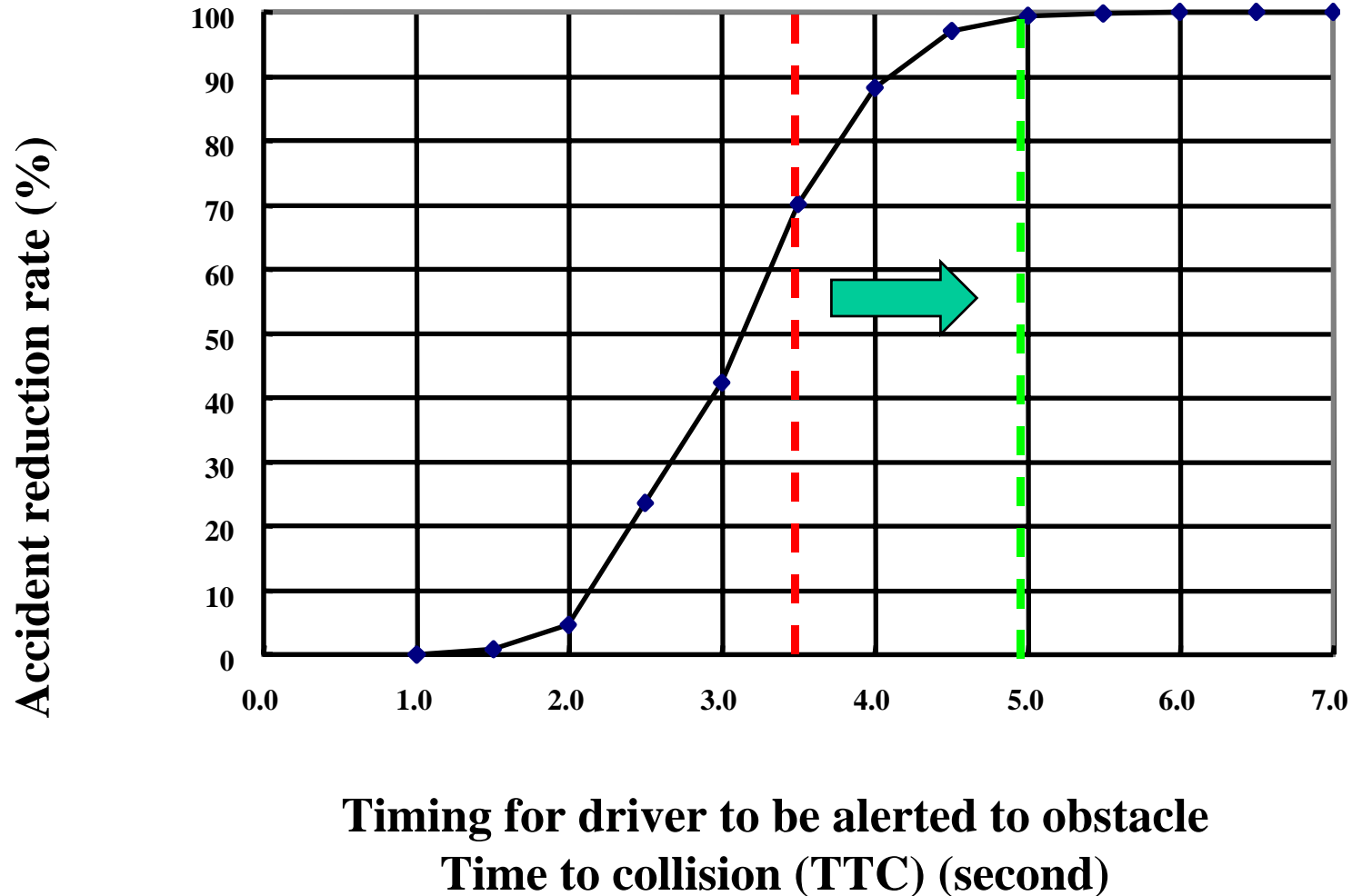
# Breakdown of Causes in the Driver



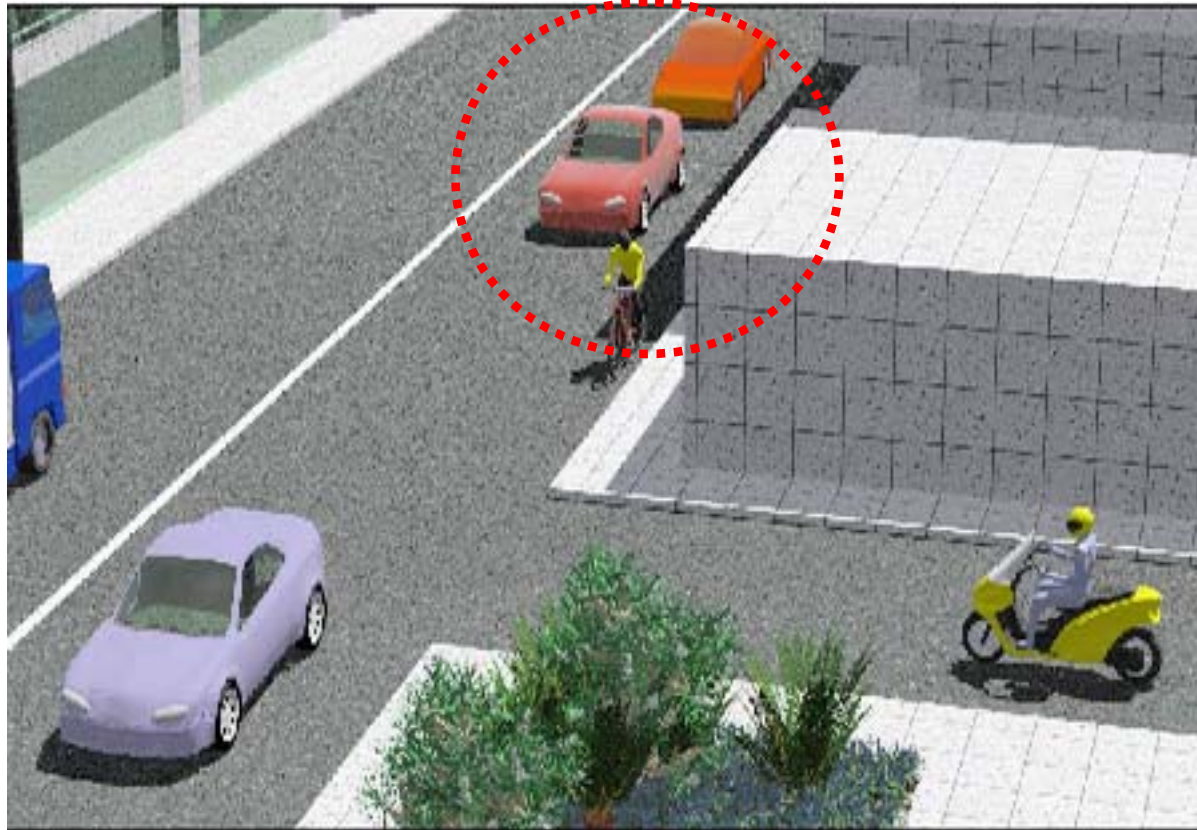
# Visible Range at Curve



# Reduction Rate of Crashes with Objects



# Blind Spot



# Comparison of Features

Item	Vehicle Standalone	Road Infrastructure or Other Vehicle
Acquisition of information on vehicle vicinity	Strength	Limitation
Acquisition of information at distance, on blind spots	Impossible	Possible
Usable locations	All	Only where installed
Flexibility of perspective	Small	Great
Signal throughput	Short	Long
Linkage to other information	Difficult	Few limitations
Influence of weather	Affected	Not affected
Separate judgment for traffic condition	Strength	Limitation
Integrated judgment for traffic condition	Limitation	Strength
Reflexive driving support	Strength	Limitation
Deliberative driving support	Limitation	Strength

**Strong Point**

**Weak Point**

# Cooperative Driver Assistance System

